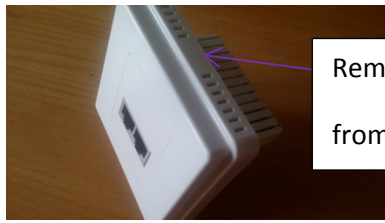


# Installation Procedure of WAP300:

## Wall plate installation



Remove the wall plate cover from the back



Make sure you write down the SSID and Password for future use.

Diagram (A)

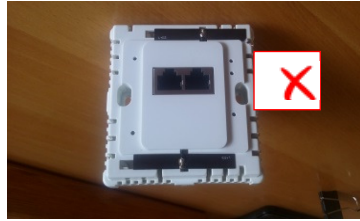
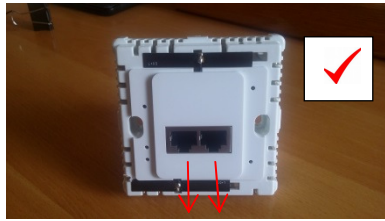


Diagram (B)

Install the wall plate into the wall with the RJ45 connector facing down as indicated in Diagram (B). Make sure this is done correctly as it is important for heat distribution.

Router Connection (source of signal) to the WAP300 should be installed in one of two ways

- A) If your VOIP router has built in power support for external device connection, then connect in the following as Diagram (C)

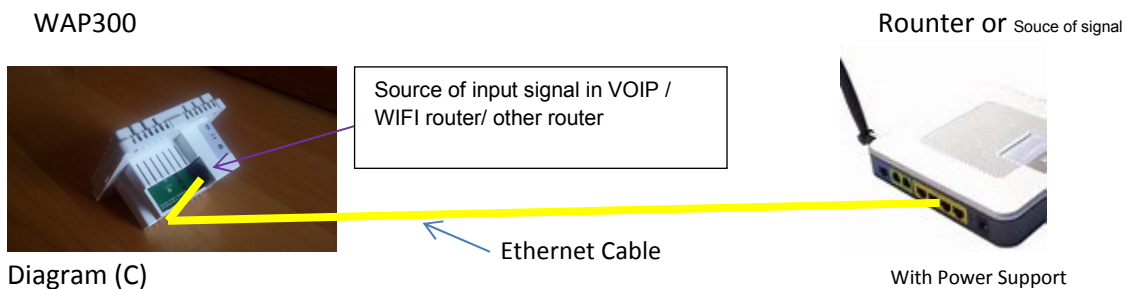
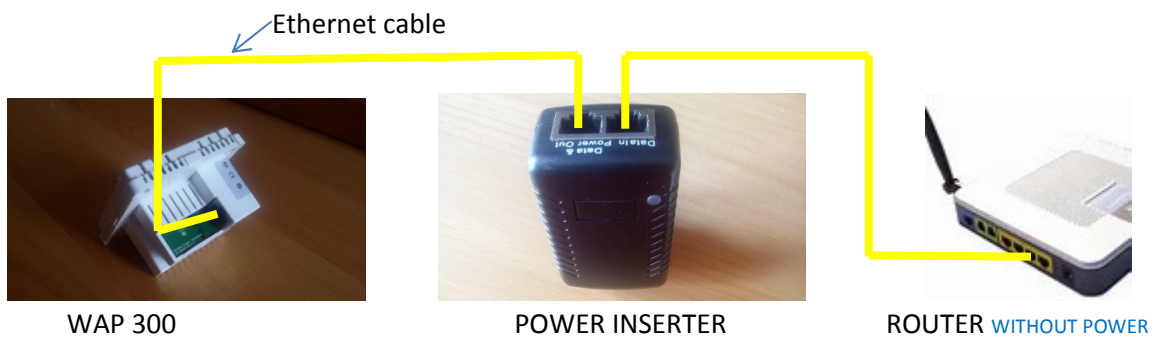


Diagram (C)

Note : If you see the LED is on at the front of WAP300 that means the unit has power. (skip B))

[If you do not see the LED on at the front of WAP300, then follow the instructions below](#)

- B) If the VOIP router does not have power support, connect the device as follows in Diagram (D)



WAP 300

POWER INSERTER

ROUTER WITHOUT POWER

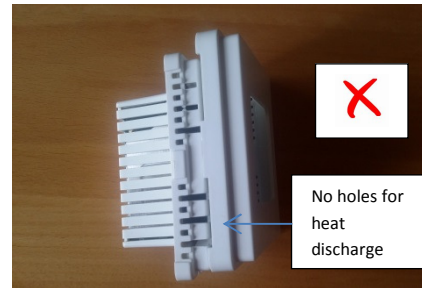
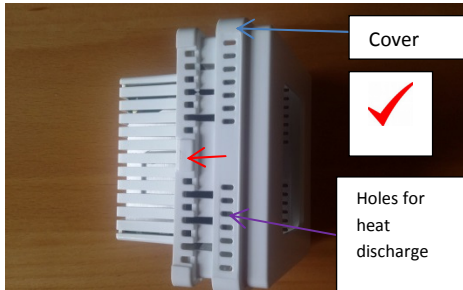
## Installing the Power Inserter

- 1) Plug in the power inserter to the power source making sure the green LED is on.
- 2) Connect the Ethernet cables from the Router (Data out Port) and out to the (Data in) of the power inserter.
- 3) The Power inserter transforms the existing wired Ethernet cable to be served both a Power and Data Line for the WAP300.
- 4) On the other end, connect the WAP300 to the Ethernet cable. Make sure it is on the same line as the Route/Power inserter.

### Diagram (D)

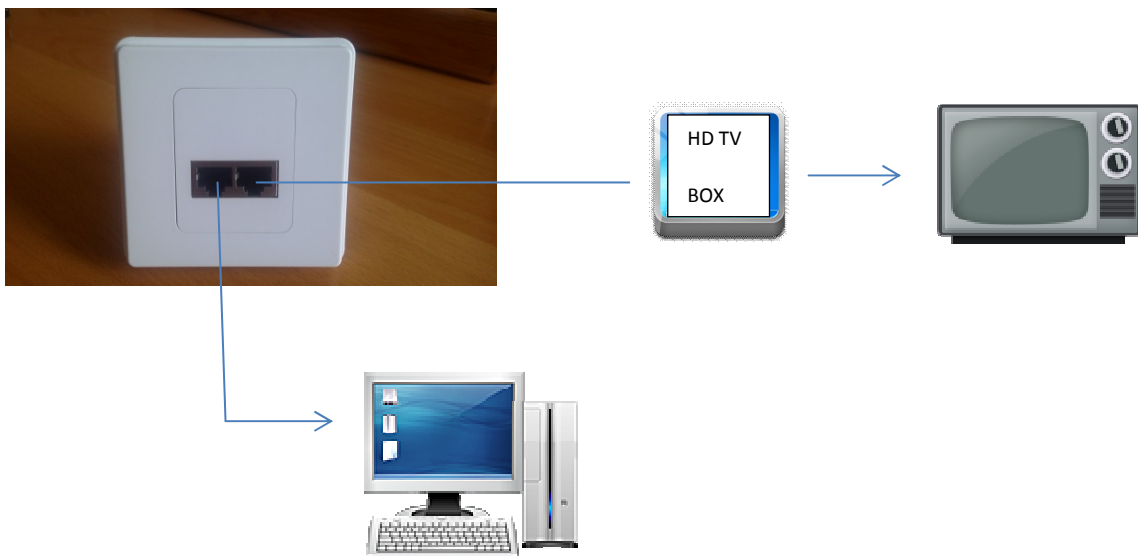
**Note : When the RED LED is on, the WAP300 will generate it's WIFI signal as a router automatically**

Close the WAP300 cover as shown in diagram (E)



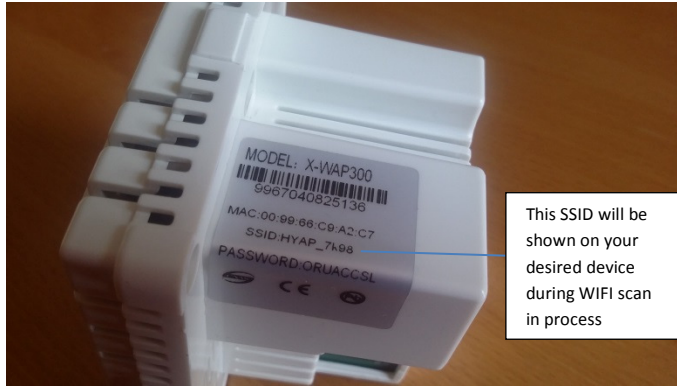
### Diagram (E)

## Connect to Hard Wired Devices



### Connect to Wireless Devices

1. Turn on the WIFI on your desired device
2. Scan for available networks on your device and select the appropriate one



3. Select the device ID as shown in the WAP300
4. Enter the password as shown in the WAP300

The following diagram is a typical desired device application

